

# Monthly Statistical Report

## September 2009



Circulation by Material Type (all locations)				
	Sep. '08	Sep. '09	YDT 2008	YDT 2009
Audiobook	9,219	8,000	84,065	76,169
Fiction	14,354	13,726	123,296	126,397
Nonfiction	11,337	11,238	104,349	102,701
Children's	12,134	10,917	105,419	104,059
Video	38,147	36,432	355,115	356,141
Periodicals	2,176	1,796	20,780	18,615
E-Content	219	375	2,134	2,754
Misc.	84	14	433	316
<b>Total</b>	<b>87,670</b>	<b>82,498</b>	<b>795,591</b>	<b>787,152</b>

Circulation by Location				
	Sep. '08	Sep. '09	YDT 2008	YDT 2009
Bookmobile	1,058	672	7,858	6,930
Delaware	11,148	10,422	100,867	92,386
Howe	3,049	2,756	26,502	29,361
Main	60,900	56,190	552,251	535,730
North Albany	4,109	4,764	35,486	45,218
Pine Hills	7,406	7,694	72,627	77,527
<b>Total</b>	<b>87,670</b>	<b>82,498</b>	<b>795,591</b>	<b>787,152</b>

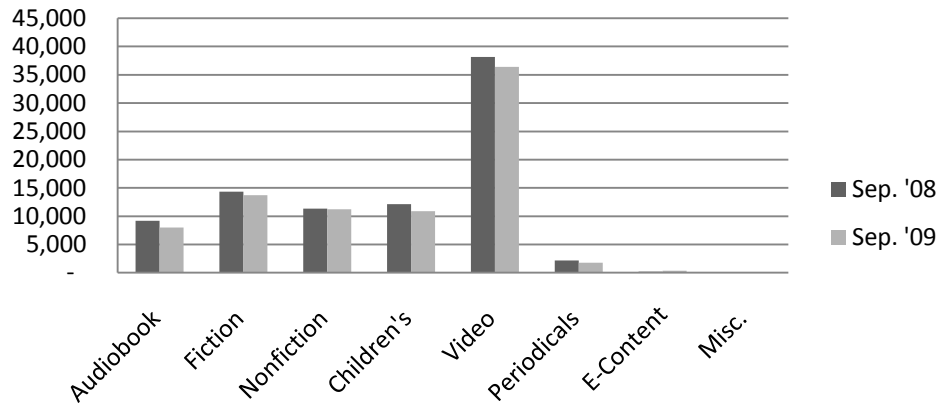
Computer Use				
	Sep. '08	Sep. '09	YDT 2008	YDT 2009
Delaware	1,210	1,727	11,556	13,437
Howe	1,212	1,161	12,140	9,268
Main	7,050	6,684	64,037	64,064
North Albany	883	895	8,165	8,059
Pine Hills	996	1,071	9,812	10,365
<b>Total</b>	<b>11,351</b>	<b>11,538</b>	<b>105,710</b>	<b>105,193</b>

Reference Transactions				
	Sep. '08	Sep. '09	YDT 2008	YDT 2009
Bookmobile	128	89	859	1,119
Delaware	430	574	3,741	5,014
Howe	142	225	2,217	3,279
Main	5,240	5,472	47,719	50,093
North Albany	120	152	1,036	1,401
Pine Hills	338	310	3,475	3,144
<b>Total</b>	<b>6,398</b>	<b>6,822</b>	<b>59,047</b>	<b>64,050</b>

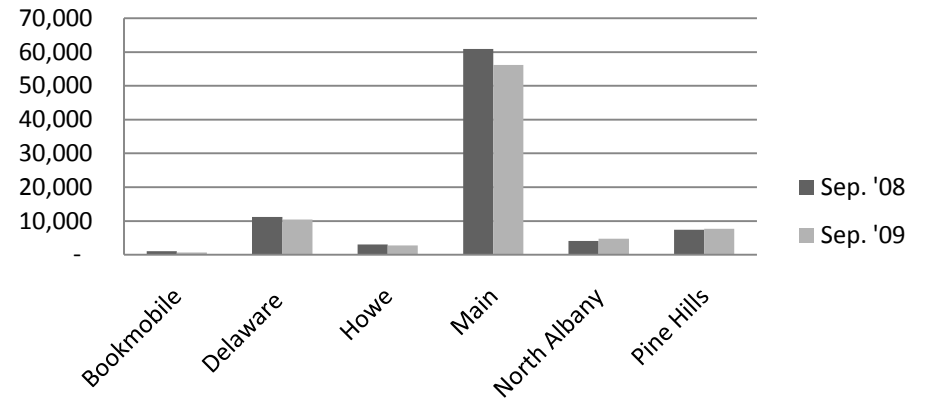
Door Count				
	Sep. '08	Sep. '09	YDT 2008	YDT 2009
Bookmobile	484	528	2,903	3,374
Delaware	7,568	8,656	69,774	73,900
Howe	5,049	4,008	33,611	42,886
Main	47,821	52,327	406,298	418,480
North Albany	4,385	4,088	40,172	39,838
Pine Hills	5,544	7,151	50,855	61,674
<b>Total</b>	<b>70,851</b>	<b>76,758</b>	<b>603,613</b>	<b>640,152</b>

New Borrower Registrations				
	Sep. '08	Sep. '09	YDT 2008	YDT 2009
Bookmobile	35	7	97	122
Delaware	133	54	756	540
Howe	44	29	384	293
Main	581	295	3,931	2,569
North Albany	24	22	140	139
Pine Hills	87	46	746	328
<b>Total</b>	<b>904</b>	<b>453</b>	<b>6,054</b>	<b>3,991</b>

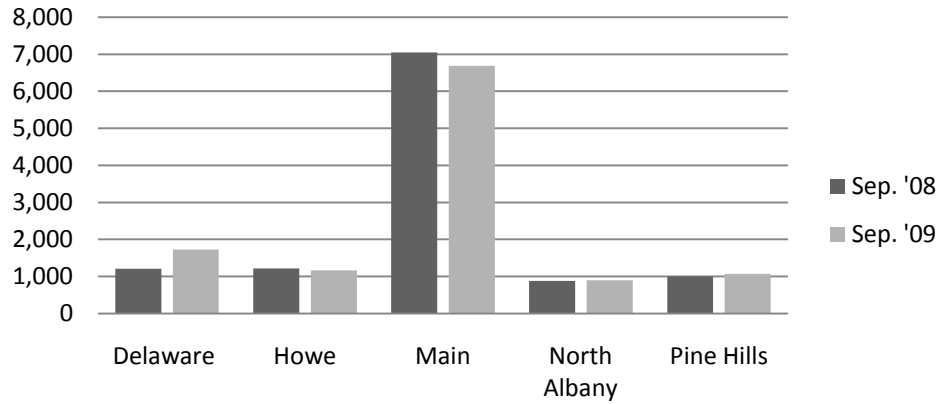
### Circulation by Material Type



### Circulation by Location



### Computer Use



### Reference Transactions

